

# Delivering Innovative LABORATORY Supply For Advanced Scientific Discoveries

**MINI CATALOGUE**



[www.hercuvan.com](http://www.hercuvan.com)



## Dear Valued Customer,

We have been constantly developing and delivering innovative products and solutions in areas of liquid handling, sample pretreatment, temperature control, sample handling, microvolume spectrophotometer, microplate reader, FISH hybridization system, thermal cyclers, electrophoresis & blotting system for applications in the field of laboratory, analytical, biomedical science and life science research.

We have one core mission in our heart: to make your workflow in the lab easier and more streamlined at much lower cost.

For up-to-date information on Hercuvan products, visit [www.hercuvan.com](http://www.hercuvan.com) where you can access:

- Product information
- Technical datasheet
- Product catalogue
- Selection guide
- Latest news & events
- Video
- Journals cited the use of Hercuvan's equipment

Any questions or suggestions? You can reach your local contact or drop us a line to [info@hercuvan.com](mailto:info@hercuvan.com). We are looking forward to hearing from you!

## General Information

### Warranties and limitation

Hercuvan makes no warranties as to the suitability of the product for a user's specific application. The usefulness of the product must be determined by the end-user. Our products are intended for research use only and not for use in diagnostic and therapeutic procedures.

### Disclaimer

Hercuvan reserves the right to change its products and services at any time to incorporate technological development. Although this catalogue has been prepared with every precaution and ensures accuracy, Hercuvan assumes no liability for any errors omissions, nor for any damages resulting from the application or use of this information.

### No liability for consequential damages

Hercuvan shall not be liable for any damages whatsoever arising out of the use or inability to use this product.

### Illustrations

All images are for illustration purpose only, actual products might differ from the pictures. Subject to technical changes.

The glass vessels and containers shown in the photos together with the instruments are generally not included in the product package.

### Restriction of sale

Certain products featured in the catalog are available for sale in certain region only. On request, we will gladly provide information with regard to their availability in other countries.



## /01 NANO SERIES

ND-2800-ODJ Nano DOT Nucleic Acid Analyzer  
ND-3800-OD Nano DOT Microspectrophotometer  
NS-100 Nano Scan Microplate Reader  
NP-500 Nano Probe Hybridization System



## /02 GENE SERIES

GS-96/ 60/ 9677/ 384/ 2x48/ 4830/ 322/ 96 PRO Gradient Touch Thermal Cycler  
GS-1602/3022 Minica Personal Thermal Cycler



## /03 ELECTROPHORESIS & BLOTTING SERIES

TT-HES-1 MiniGEL Electrophoresis System  
ConcertoGEL Midi/ Classic/ Classic XL/ Maxi/ Horizontal Electrophoresis System  
ConcertoGEL Package Deals



## /04 SYMPHONYPAGE Mini Vertical Electrophoresis System

SymphonyW Maxi Vertical Electrophoresis System  
SymphonyW Maxi 2D System  
SymphonyIEF Isoelectric Focusing  
SymphonyBLOT Mini/Maxi Blotting System



## /05 SYMPHONYW Maxi Modular System

SymphonyPAGE Package Deals



## /06 RHYTHM300/ 500 Power Supply

Melody300/ 500/ 3000 Power Supply



## /07 HARMONYCS Consort Power Supply



## /07 LABWARE SERIES

Disposable Gel Cutting Tips



## /08 TABLE TOP SERIES

### LIQUID HANDLING

TT-EP2 ElitePro 2.0 Single Channel Adjustable Volume Pipette  
TT-EP ElitePro Multi-Channel Adjustable Volume Pipette  
ElitePro FlexiStand

### STERILIZER

TT-300-GBS/ TT-300L-GBS Glass Bead Sterilizer  
TT-825-S / TT-825-L Infrared Micro-Sterilizer



## /09 SAMPLE PRETREATMENT

TT-30K Digital Handheld Homogenizer  
TT-13K Mini Handheld Homogenizer

## STIRRER & HOTPLATE

TT-SSMS-200 CellaSpin Slow Speed Magnetic Stirrer  
TT-DOS-40 Twister Digital Overhead Stirrer  
TT-DMS-16/ TT-DMSH-350S CycloneSpin Digital Magnetic Stirrer/Hotplate



## SHAKING INCUBATOR

TT-60-SI InQShake Shaking Incubator  
TT-60-MSI InQShake Microplate Shaking Incubator  
TT-60-RSI InQShake Refrigerated Shaking Incubator  
TT-60-SIL InQShake Shaking Incubator



## THERMO SHAKER

TT-100C/ TT-100H Thermo Shaker Incubator  
TT-70-2-S/ TT-60-4-S Thermo Shaker Incubator



## ROCKER & SHAKER

TT-10-RS-1/ TT-10-RS-2 2D Rocker-Shaker  
TT-20-NR 3D Mini Nutating Rocker  
TT-10/ TT-20/ TT-30 Orbital Shaker  
TT-1500 Microplate Shaker



## CENTRIFUGE

TT-6000/ TT-3K-10K Mini Centrifuge



## TT-2500 Microplate Centrifuge

TT-14500 PRO Microcentrifuge  
TT-4500 Low Speed Centrifuge  
TT-15000 High Speed Centrifuge  
TT-15000R Refrigerated High Speed Centrifuge



## VORTEX MIXER

TT-254-VM VeloTEX Vortex Mixer  
TT-2500VM Multi-Tube Vortex Mixer  
TT-3000 Smart Mixer  
TT-2800-VVM Mini Vortex Mixer



## GEL DOCUMENTATION

TT-BLT-470 SafeViewer Blue Light Transilluminator



## DRY BATH INCUBATOR

TT-100F/HT/HL/CL/CTL Mini Dry Bath Incubator  
TT-100DHT/TT-100-DHC Dry Bath Incubator  
TT-200BI Biological Indicator Incubator  
TT-70-2/ TT-60-4 Microplate Incubator



## WATER BATH

TT-TWB-2L/4L/5L and 6L Marina Thermostatic Water Baths



## SAMPLE CONCENTRATOR

TT-200-1-SC/ TT-200-2-SC Sample Concentrator  
TT-200-96SC 96-Well Sample Concentrator  
TT-200N-VSC Visible Sample Concentrator



## VACUUM ASPIRATOR

TT-VA-8/TT-VA-35 Vacuum Aspirator



**MICROVOLUME SPECTROPHOTOMETER**

- Stand-alone Integrated Android System
- User-friendly 7-inch touch screen
- Only requires less than 2uL sample, no dilution required
- Rapid (Results in ≤8s)
- Long lifespan (up to 10 years)

**Product Selection Guide**



**Applications**

- Full Spectral Data (200 - 800nm)
- Measures Nucleic Acid Concentration
- Measures Nucleic Acid 260/280 Ratio
- Measures Nucleic Acid 260/230 Ratio
- Measures Protein A280
- Measures Protein BCA
- Measures Protein Lowry
- Measures Protein Bradford
- Measures OD600
- Measures Industrial Dyes (490nm)
- Measures Gold Nanoparticles (520nm)

**ND-3800-OD Nano DOT Microspectrophotometer**

**ND-2800-ODJ Nano DOT Nucleic Acid Analyzer**



Product Video ND-3800-OD



Product Video ND-2800-ODJ

**NS-100 Nano Scan Microplate Reader**

**340-750nm**

- Intuitive 7-inch touch screen
- Stand-alone system
- 8 channel vertical optical path
- Broad wavelength range (4 standard filters: 405nm, 450nm, 492nm, 630nm with optional filters from 340-750 nm)
- Flexible data output (thermal printer or export via USB drive)
- Fast results in 6 seconds



Product Video

**NP-500 Nano Probe FISH Hybridization System**



- Intuitive touch screen LCD interface
- Four operation modes: denaturation/hybridization, fixed temperature hybridization, custom and in-situ PCR
- Rapid temperature warm-up and high temperature accuracy (±1°C)
- Excellent temperature uniformity
- Efficient humidity control system
- Convenient data transfer via USB drive



Product Video

**GS-96/ 60/ 9677/ 384/ 2x48/ 4830/ 322/ 96 PRO Gradient Touch Thermal Cycler**

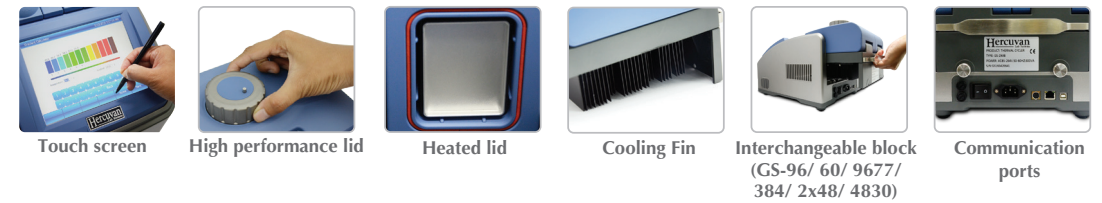


GS-96 / GS-60/ GS-9677 GS-384 / GS-96 PRO GS-2x48/ GS-4830 GS-322

- Intuitive 8-inch TFT touch screen
- High performance lid with unique clutch system
- Easy data output via USB drive
- Personalized log in users and passwords
- LAN network enabled (control up to 30 units)
- Free and easy software updates
- GLP report records all PCR runs
- 6 temperature zones (GS-96 PRO)
- 3 temperature zones (GS-322)



Product Video



**Technical Data**

Specifications	GS-96/60/9677/384/2x48/4830	GS-96 PRO	GS-322
Capacity	96 x 0.2 ml/ 60 x 0.5 ml/ 384 x 0.02 ml/ 2 x 48 x 0.2 ml/ 48 x 0.2 ml + 30 x 0.5 ml/ 96 x 0.2 ml/ + 77 x 0.5ml	6 x 16 x 0.2 ml (6 temperature zones)	3 x 32 x 0.2 ml (3 temperature zones)
Temperature range	0 - 100°C	4 - 100°C	0 - 100°C
Temperature gradient	30°C	25°C (max. 5°C zone-to-zone)	30°C
Gradient temperature range	30 - 100°C	30 - 100°C	30 - 100°C
Ramp rate adjustable	0.1- 5.0°C /sec	0.1- 6.0°C /sec	0.1- 5°C /sec

**GS-1602/3202 Minica Personal Thermal Cycler**

- Compact and lightweight
- Easy to program
- High performance lid
- Latest generation of semiconductor technology
- Two temperature control modes available
- Easy data output
- Personalized log in users and passwords
- Free and easy software updates



Product Video

**16-well x 0.2 ml tubes**

**32-well x 0.2 ml tubes**



GS-1602 MiniCa Personal Thermal Cycler



GS-3202 MiniCa Personal Thermal Cycler



Excellent PCR performance with efficient module heat conduction that provides great temperature uniformity. The multiple evenly distributed sensors provide improved temperature control.

Efficient heat dissipation is achieved from the one-piece aluminium design on the bottom.

The lid structure design adapts to different tube heights to ensure proper compression.

5 inches TFT high-definition touchscreen display



**TT-HES-1 MiniGEL  
Electrophoresis System**



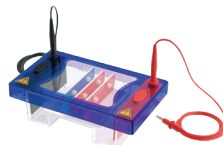
**5.4 x 6 cm, 6 x 11 cm**

- Integrated power supply: Just plug into the gel tank and ready to cast
- Three pre-set voltage selector: 35V, 50V and 100V
- Digital timer (0 – 99 minutes or continuous mode)



Product Video

**ConcertoGEL Midi  
Horizontal Electrophoresis System**

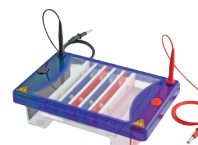


**10 x 7 cm,  
10 x 10 cm**

- Ideal for routine, rapid PCR sample screening and DNA fragment analysis
- Up to 100 samples per gel in single run
- Comes with combs, casting dams and gel tank
- Power supply available as complete set or separate unit

ConcertoGEL Midi

**ConcertoGEL Classic  
Horizontal Electrophoresis System**



**15 x 7 cm,  
15 x 10 cm,  
15 x 15 cm**

- For routine sample screening
- Up to 210 samples
- Multichannel pipette compatible combs prevent time-consuming sample loading
- Classic Trio includes all 3 tray sizes

ConcertoGEL Classic



3 tray sizes

**ConcertoGEL Classic XL  
Horizontal Electrophoresis System**

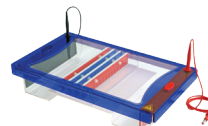


**15 x 20 cm,  
15 x 25 cm**

- Higher resolution separation
- Up to 350 samples
- Multichannel pipette compatible combs prevent time-consuming sample loading

ConcertoGEL Classic XL

**ConcertoGEL Maxi  
Horizontal Electrophoresis System**



**20 x 10 cm,  
20 x 15 cm,  
20 x 20 cm**

- Ideal for separation of large number of samples from PCR or cloning
- Up to 550 samples per gel (50-well combs)
- Multichannel pipette compatible combs are available
- Suitable for RFLP analysis, southern and northern blotting, DNA library and PCR fragment analysis

ConcertoGEL Maxi

**ConcertoGEL Horizontal Electrophoresis System Package Deals**



CGMIDIDUO-RT300

- 10x7cm and 10x10cm gel trays
- 2 combs (16 teeth)
- Rhythm300 power supply



CGCLTRIO-ML300

- 15x7cm, 15x10cm & 15x15cm gel trays
- 2 combs (20 teeth)
- Melody300 power supply



CGMAXIDUO-ML300

- 20x10cm and 20x20cm gel trays
- 2 combs (20 teeth)
- Melody300 power supply

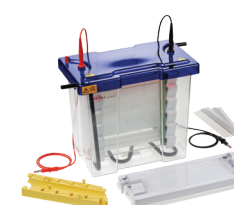
**SymphonyPAGE Mini  
Vertical Electrophoresis System**



**8 x 10 cm, 10 x 10 cm**

- For routine and rapid protein separation, new sample screening, Native PAGE
- Run up to 4 handcast gels and 2 precast gels
- Two-in-one gel casting and running saves operation time
- Easy and leak-proof gel casting
- Sliding clamp allows rapid setup of handcast and precast gels

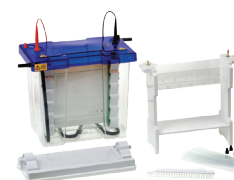
**SymphonyW Maxi  
Vertical Electrophoresis System**



**20 x 20 cm**

- Versatile system for 1D and 2D SDS-PAGE, capillary tube IEF or IPG strips and blotting
- Faster setup with only 4 screws to secure glass plates (even pressure)
- Run up to 4 gels simultaneously (TETRAD system)
- Injection moulded construction ensures robustness and leak-proof system
- Detachable inner cooling coil allows rapid, smile-free electrophoresis at higher voltages

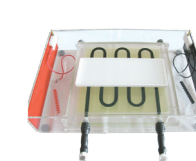
**SymphonyW Maxi  
2D System**



**10 first-dimension IEF tube gels, 18 cm IPG strip**

- Comprises all necessary components for 2D electrophoresis with capillary tube gels
- Interchangeable inserts to run capillary tube gels for 1D IEF and vertical gel slabs for 2D SDS-PAGE using the same universal tank and lid

**SymphonyIEF  
Isoelectric Focusing**



**12 IPG strips**

- Ideal for IPG strips and IEF gels
- Maximum 12 IPG strips (7-24cm) and rehydration tray provided
- Large cooling platform with adjustable electrodes

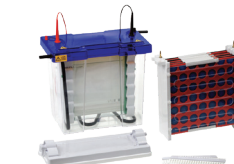
**SymphonyBLOT Mini  
Blotting System**



**10 x 10 cm,  
4 blot capacity**

- Integrated system with same universal tank and lid
- Hinged cassettes for even pressure and contact between gel and membrane
- Available in standard and high intensity options Rapid and simple cooling setup

**SymphonyBLOT Maxi  
Blotting System**



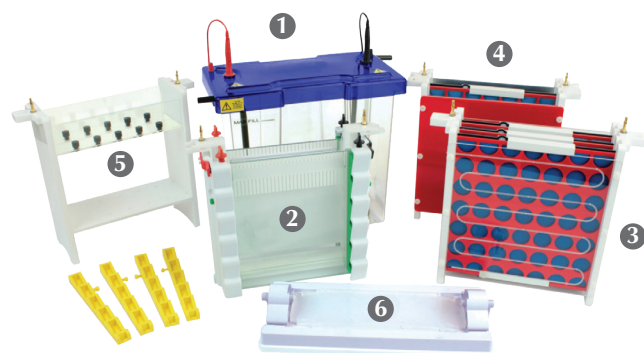
**20 x 20 cm,  
4 blot capacity**

- Universal tank and lid for vertical PAGE and blotting
- Rigid, open design cassettes maximise current transfer and prevents 'shadow band' formation
- Colour-coded cassettes prevent polarity reversal



**SymphonyW Maxi Modular System**

Interchangeable inserts for PAGE, tube gel and blotting applications



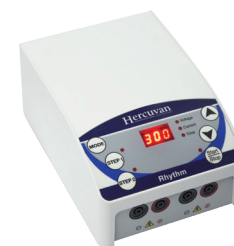
- Save cost and reduced bench space
- User-friendly casting and reproducibility
- Suitable for large format and high-resolution applications

**Components of SymphonyW Maxi Modular System:**

- |                                     |                                 |
|-------------------------------------|---------------------------------|
| 1. Tank and lid                     | 2. PAGE module                  |
| 3. Blotting module                  | 4. Hi-intensity blotting module |
| 5. Capillary electrophoresis module | 6. Casting base                 |

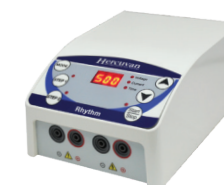
**Rhythm300 Power Supply**

Max. 300V, 400mA



**Rhythm500 Power Supply**

Max. 500V, 400mA



- Suitable for DNA, RNA and protein electrophoresis
- Clear and bright 3-digit LED with alarm function
- Economical with small footprint, saves bench space
- Precise setting with 1V and 1mA increment
- Run up to 2 electrophoresis units simultaneously
- Robust and easy-to-clean polycarbonate housing

**Melody300 Power Supply**

Max. 300V, 700mA



**Melody500 Power Supply**

Max. 500V, 800mA



**Melody3000 Power Supply**

Max. 300V, 3000mA



- Multipurpose unit for horizontal and vertical electrophoresis
- Bright and clear LED display
- Built-in preset protocols and save up to 30 programs
- Operable at constant and programmable setting simultaneously (Melody500 and Melody3000)
- Runtime extendable to 999 mins for overnight transfers (Melody3000)

**Catalog Number**

**Description**

EB-VES-SWMAXICES	SymphonyW Maxi, 20 x 20 cm, Complete Vertical Electrophoresis System; 1 x W Maxi Vertical Unit, 1 x Capillary Electrophoresis Module and 1 x W Maxi IEF Kit
EB-VES-SWMAXICES-HI	SymphonyW Maxi, 20 x 20 cm, Complete Vertical Electrophoresis System for High-Intensity Blotting: 1 x W Maxi Vertical Unit, 1 x High- Intensity Blotting Module and 1 x W Maxi IEF Kit
EB-VES-SWMAXI2DS	SymphonyW Maxi Complete 2D System: 1 x W Maxi Vertical Unit, 1 x Capillary Electrophoresis Module and 1 x W Maxi IEF Kit

**SymphonyPAGE Vertical Electrophoresis System Package Deals**



**SPMINISYS-ML300**

- Mini system (10 x 10 cm)
- PAGE module
- Melody300 power supply



**VSPMINICBS-ML300**

- Mini system (10 x 10 cm)
- PAGE module
- Blotting module
- Melody300 power supply



Product Video

## HarmonyCS Consort Power Supply

Max. 400V, 500mA



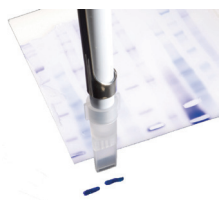
- Intuitive setting with real time clock date and time
- 4 available languages
- Various running modes

- Firmware updates via USB interface
- Automatic recovery after power failure
- Safety features include ground leakage detection, overload protection, no-load detection, smooth voltage rise and isolated communication

Model	Voltage	Current	Power
HarmonyCS1450	0-400V	0-500mA	0-50W
HarmonyCS2310	0-300V	0-1000mA	0-150W
HarmonyCS2650	0-600V	0-500mA	0-150W
HarmonyCS2230	0-1500V	0-300mA	0-150W
HarmonyCS2320	0-3000V	0-150mA	0-150mA
HarmonyCS3020	0-300V	0-2000mA	0-300W
HarmonyCS3610	0-600V	0-1000mA	0-300W
HarmonyCS3150	0-1200V	0-500mA	0-300W
HarmonyCS3330	0-3000V	0-300mA	0-300W
HarmonyCS3620	0-6000V	0-150mA	0-300W

# LABWARE SERIES

## Disposable Gel Cutting Tips



- Specially designed to excise bands from agarose and protein gels
- Avoid scalpel damage to gel tray and transilluminators
- Push button gel and tip release mechanism
- Suitable for standard 1000µl pipettes
- Autoclavable, sterile versions also available
- Certified DNase-free, RNase-free and Pyrogen-free

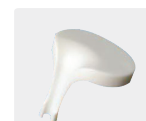
## LIQUID HANDLING

### TT-EP2 ElitePro 2.0 Single Channel Adjustable Volume Pipette

0.1 µL-10 mL



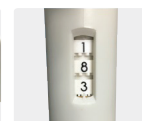
- New generation pipettes with minimized actuation forces (only 3.8 Newton)
- Ergonomical tip ejector button and comfortable fit for hands
- Adjustable volume with Swivel-Lock to prevent accidental volume change
- Compatible with a wide range of tips
- Superior accuracy and reproducibility
- Open-ended design calibration tool can be used without disassembly and removing the plunger button



Free calibration tool provided



Swivel-Lock System prevents accidental volume change



Equivalent of 4-digit micrometer system

### TT-EP ElitePro Multi-Channel Adjustable Volume Pipette

1.0 µL-300 µL



8-Channel Pipette

12-Channel Pipette

- Lightweight, robust and suitable for routine with prolonged use
- Reduced actuation forces (only 3.8 Newton)
- Ergonomical design provides maximum comfort
- Adjustable volume with Swivel-Lock to prevent accidental volume change
- Remarkable accuracy and reproducibility
- Compatible with a wide range of tips
- Open-ended design calibration tool can be used without disassembly and removing the plunger button

### ElitePro FlexiStand



6 pipettes up to 4 multi-channels

- Fits wide range of pipettes
- "Windows" to accommodate multi-channel pipettes with ease
- Non-skid rubber bottom for stability
- Robust build with 5mm acrylic (40% thicker)

## STERILIZER

### TT-300-GBS/ TT-300L-GBS Glass Bead Sterilizer

100-300°C



TT-300-GBS  
Glass bead capacity 300g



TT-300L-GBS  
Glass bead capacity 600g

- Multiple slits enable better heat dissipation
- Effective sterilization of solid metal and glass implements
- Safe to use – no gases, open flames or harsh chemicals
- Portable, lightweight and compact footprint, can be placed in Laminar Flow Cabinet for convenience

### TT-825-S / TT-825-L Infrared Micro-Sterilizer

Max. temp. 825 ± 50°C



TT-825-S  
Chamber diameter 14 mm



TT-825-L  
Chamber diameter 35 mm

- Safe and convenient sterilizer
- Adjustable angle heating chamber
- Safeguard users without open flame and hazardous gas
- Standby mode with lower temperature setting (480°C) for prolonged life



Adjustable angle heating chamber



High & low temperature setting

SAMPLE PRETREATMENT

TT-30K Digital Handheld Homogenizer

8,000-35,000 rpm



- Practical for small samples ranging from 0.5 ml to 250 ml
- Autoclavable generator shaft (316L stainless steel)
- Interchangeable generator probes are easily disassembled for cleanup
- Optional H-type stand (adjustable height and angle)

TT-13K Mini Handheld Homogenizer

13,000 rpm



- Battery powered, ideal for field work and mobile applications
- Homogenization of sample in 1.5 ml or 2.0 ml microcentrifuge tubes
- Disposable plastic grinding pestles avoid contamination
- Choice of disposable plastic and stainless steel grinding pestles (autoclavable)

STIRRER & HOTPLATE

TT-SSMS-200

CellaSpin Slow Speed Magnetic Stirrer

5-200 rpm, Max. capacity 3L



- Programmable setting up to 9 programs with cycle numbers
- Stainless steel working platform
- Able to accommodate up to 3L of culture or media



Product Video

TT-DOS-40

Twister Digital Overhead Stirrer

50-2,200 rpm, Max. capacity 40L



- Intuitive and clear LED display with real-time speed and torque
- Accurate and constant speed control
- Anti-spill with smooth start
- Safety features with alarm (eg. overload, short circuit and abnormal speed)
- Clockwise and counter clockwise stirring mode
- 4 types of stirrer rods options available
- Each standard set includes 1 stirrer rod of choice



Product Video

TT-DMS-16 CycloneSpin Digital Magnetic Stirrer

200-1600 rpm, Max. capacity 20L



- 30° control slope, easy-to-read LED display
- Stainless steel with silicone pad
- Maintenance-free brushless motor



Product Video

TT-DMSH-350S CycloneSpin Digital Magnetic Stirrer Hotplate

80-1,800 rpm, Max. capacity 20L, R.T. +5°C-340°C with external temp. probe



- 30° control panel slope, intuitive holographic display
- Chemical resistance ceramic
- Powerful and stable stirring
- Equipped with PID for precise temperature control
- Maintenance-free brushless motor
- Optional external temperature probe for monitoring



Product Video

SHAKING INCUBATOR

TT-60-SI

InQShake Shaking Incubator

50-300 rpm, R.T. + 5-60°C, 20mm Ø

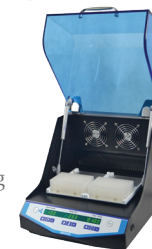


- Microprocessor controls for temperature and speed adjustment
- Wide-angled cover lid enables easy sample loading and unloading
- Maintenance-free brushless DC motor
- Independent temperature alarm system, heating function off when exceeding temperature limit
- Wide variety of interchangeable platforms

TT-60-MSI

InQShake Microplate Shaking Incubator

200-1,200 rpm, R.T. + 5-60°C, 3mm Ø



- Fits up to 4 microplates (full-skirt 96/384-well) and cell culture plates (24/48/96-well)
- Microprocessor controls for temperature and speed adjustment
- Wide-angled cover lid enables easy sample loading and unloading
- Maintenance-free brushless DC motor
- Independent temperature alarm system, heating function off when exceeding temperature limit



Product Video

TT-60-RSI

InQShake Refrigerated Shaking Incubator

50-300 rpm, 4-60°C @ RT ≤25°C, 20mm Ø



- Microprocessor controls for temperature and speed adjustment
- Wide-angled cover lid enables easy sample loading and unloading
- Maintenance-free brushless DC motor



Product Video

TT-60-SIL

InQShake Shaking Incubator

50-300 rpm, R.T. + 5-60°C, 20mm Ø



- Microprocessor controls for temperature and speed adjustment
- Independent temperature alarm system, heating function off when exceeding temperature limit
- Wide variety of interchangeable platforms
- Able to accommodate up to 4 x 2L vessels



Product Video

Optional Platforms



TT-UP-12 Universal platform with adjustable bars



TT-P6-250 Platform with clamps for 250-300 ml flasks



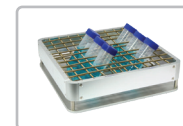
TT-P12-100 Platform with clamps for 100-150 ml flasks



TT-PP4 Flat platform with non-slip rubber mat



TT-PP4A Two-level flat platform with non-slip rubber mat



TT-UP-260 Universal platform with spring

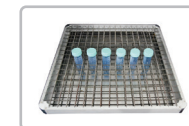


TT-SPD-GS Sticky Pad for TT-PP4 or TT-PP4A

Specific Accessories



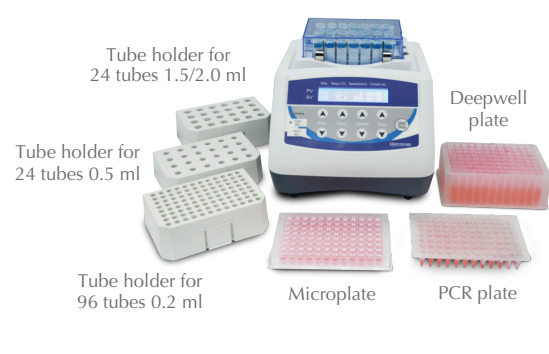
TT-PW-1500 280 x 214 x 13mm (for TT-60-MSI only)



TT-PW-420 410 x 420 x 65mm (for TT-60-SIL only)



**THERMO SHAKER**  
**TT-100H/TT-100C**  
**Thermo Shaker Incubator**



**3-in-1 Module: Shaking and Temperature Control**

- Plate (shaking and mixing)
- 96-well and 384-well PCR plate, 96 and 384 deep well plates, MTP plates
- Tube Holder (shaking and mixing) 0.2 ml PCR tubes and PCR strip tubes, 0.5 ml microtubes, 1.5/2.0 ml microtubes
- Blocks (shaking, mixing and incubating)



- Adjustable mixing speed, temperature and time with programmable features
- Simultaneous indication of set and actual temperature, speed and time
- Various block options
- Built-in temperature calibration
- With short mix operation mode

**Technical Data**

Specifications	TT-100H Thermo Shaker Incubator	TT-100C Thermo Shaker Incubator
Speed range	300-1,600 rpm (Standard) 300-2,000 rpm (Turbo mix)	300-1,500 rpm (Standard)
Orbit diameter	3 mm (horizontal)	3 mm (horizontal)
Temperature setting range	5-100°C	0-100°C
Temperature control range	R.T. +5-100°C	0-100°C
Temperature stability	≤ ±0.3°C	≤ ±0.3°C
Block temperature uniformity	≤ ±0.3°C	≤ ±0.3°C
Temperature display accuracy	0.1°C	0.1°C
Heating speed	≤15min (20°C to 100°C)	≤15min (20°C to 100°C)
Cooling speed	N/A	≤30min (R.T. to R.T. -20°C) at 26°C
Each standard set includes	Tube holder for 24 tubes 1.5/2.0 ml, 24 tubes 0.5 ml & 96 tubes 0.2 ml	

**TT-70-2-S/ TT-60-4-S**  
**Microplate Thermo Shaker Incubator**



**300-1,200 rpm, R.T. + 5-70°C**

- Simultaneous indication of set, actual temperature, time and shaking speed
- Accommodate microplates and cell culture plates
- Microprocessor PID controller controls time and temperature with good linearity
- Audio alarm signals upon program completion



Product Video

**ROCKER & SHAKER**  
**TT-10-RS-1/TT-10-RS-2**  
**2D Rocker-Shaker**



TT-10-RS-1



TT-10-RS-2

**5-80 rpm, See-Saw fixed tilt angle 10°**

- Smooth see-saw motion (fixed tilt angle 10°)
- Maximum load up to 5kg
- Maintenance-free, brushless DC motor
- Stainless steel platform for durability and easy clean up
- Non-slip rubber mat included

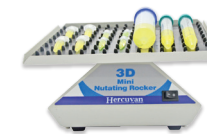
**TT-1500**  
**Microplate Shaker**



**200-1,500 rpm, 3mm Ø**

- Platform for 4 microplates supplied as standard
- LED display for time and speed
- DC brushless motor: Maintenance-free, stable & quiet operation
- Audible alarm: Alarm will sound when the time reaches zero

**TT-20-NR**  
**3D Mini Nutating Rocker**



**20 rpm, 20° fixed tilt angle**

- 3D movement for thorough and uniform mixing
- Ideal for mixing samples in blood and centrifuge tubes
- Dimpled rubber mat included
- Maximum load up to 0.8 kg
- Cold room and incubator safe

**TT-10/ TT-20/ TT-30**  
**Orbital Shaker**



**50-350 rpm**

- Choice of orbit sizes: 10 mm, 20 mm and 30 mm
- LED display for time and speed
- Quiet operation with stable & low noise
- Multiple interchangeable platform options

**CENTRIFUGE**  
**TT-6000/ TT-3K-10K**  
**Mini Centrifuge**



TT-6000 TT-3K-10K

- Interchangeable rotors for PCR tubes and PCR strips
- Simple & Fast: Spin is activated by closing the lid
- Ergonomic and compact design
- Adjustable digital timer
- Low noise



Product Video

**Technical Data**

Specifications	TT-6000 Mini-Centrifuge	TT-3K-10K Mini-Centrifuge
Speed	6,000 rpm	3,000 – 10,000 rpm (increment: 1000 rpm)
Relative centrifugal force (RCF)	Approx. 2,000 x g	Approx. 500 g – 5,300 x g
Rotor capacity	8 x 1.5/ 2.0 ml tubes 8 x 0.5 ml/ 8 x 0.2 ml tubes (using adapter) Two 8 x 0.2 ml tube strips 16 x 0.2 ml tubes	8 x 1.5/ 2.0 ml tubes 8 x 0.5 ml/ 8 x 0.2 ml tubes (using adapter) Two 8 x 0.2 ml tube strips (use only when ≤6,000 rpm) 16 x 0.2 ml tubes strips (use only when ≤6,000 rpm)

**Each Standard Set Includes**



**CENTRIFUGE**

**TT-2500  
Microplate Centrifuge**



**2,500 rpm (500 ×g), 2 standard PCR or microplates**

- Accept skirted, non-skirted and all standard PCR plates
- Maintenance-free DC brushless motor
- Fast deceleration speed (10s)
- Short-spin and timed operation modes
- Use before and after thermal cycler to improve PCR yield

**TT-14500 PRO  
Microcentrifuge**



**Max. 14,500 rpm (14,000 ×g), 12 x 1.5/2.0ml**

- Compact & small foot print conserves benchtop space
- Anodized aluminium rotor
- Autoclavable rotor (at 121°C for 20 minutes)
- Simple setting of rpm and RCF
- Separate short spin key for quick spin

Each standard set includes



Microtubes rotor



Adapter for 0.5 ml tubes



Adapter for 0.2 ml tubes

**TT-15000  
High Speed Centrifuge**



**Max. 15,000 rpm (21,400 ×g), 24 x 1.5 ml/ 2.0 ml tubes**

- 3 optional rotors to fit in different tube sizes
- Short-spin key available for quick centrifugation
- Soft brake function to avoid sample agitation and protect sensitive sample
- Automatic lid release at the end of each run prevents sample warming
- Safe to use in cold room (TT-15000 model)
- Each standard set includes TT-RT-2415 rotor

Optional Accessories



TT-RT-2415 24x1.5ml/ 2.0 ml rotor

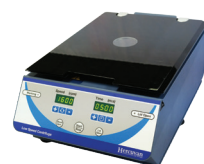


TT-RT-4820 4x8x0.2ml PCR strip rotor



TT-RT-1250 12x5.0ml rotor

**TT-4500  
Low Speed Centrifuge**



**Max. 4,500 rpm (2490 ×g), 5 ml/ 7 ml x 16; 10/ 15 ml x 12; 50 ml x 6**

- Short mix, digital time setting and continuous mode
- Rapid and gradient acceleration and deceleration
- Multiple safety features and alarms
- Quiet operation (≤56 dB)
- Fully autoclavable rotors (120°C)

Optional Accessories



TT-4500-R01 5 ml/7ml tubes x 16 rotor



TT-4500-R02 10 ml/15ml tubes x 12 rotor

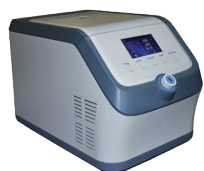


TT-4500-R03 50ml tube x 6 rotor



Product Video

**TT-15000R  
Refrigerated High Speed Centrifuge**



**Max. 15,000 rpm (21,400 ×g), 24 x 1.5 ml/ 2.0 ml tubes**

- Temperature range from -10°C to +40°C
- Rapid pre-cooling of the centrifuge (from 20°C to 4°C in 20 min)
- Continuously cools sample with constant temperature as long as lid is closed



Product Video

**VORTEX MIXER**

**TT-254-VM  
VeloTEX Vortex Mixer**



**0-2,500 rpm, 3mm Ø**

- “Continuous” or “Touch” operation mode
- Suction feet prevents excessive movement and vibration
- Various optional platforms and foam tube holders to hold different types of tubes or containers



Product Video

Each Standard Set Includes



TT-VM-1 Standard head, for tubes and vessels with dia. <30 mm



TT-VM-P Standard platform to hold foam tube holder



TT-VM-2 Convex pad, for tubes and vessels with dia. <99 mm

**TT-3000  
Smart Mixer**



**300-3,000 rpm, 3mm Ø**

96-well skirted PCR plates, 384-well PCR plates and deep well plate can be loaded into the universal holder without requiring any tube holder.

- Allows pre-programmed settings
- Universal holder holds plate and tube holders firmly
- Stable during operation
- Clear LED display
- Touch vortex: 3500rpm

**TT-2500-VM  
Multi-Tube Vortex Mixer**



**500-2,500 rpm, 4mm Ø**

- Hands-free mixing up to 50 tubes at a time
- Easy-to-read LED speed and time display
- Wide range of tube frames available to hold different sizes of test tubes
- Short mixing and timed mixing operation modes
- Maintenance-free brushless DC motor

**TT-2800-VVM  
Mini Vortex Mixer**

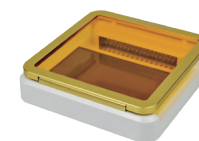


**0-4,000 rpm, 4.5 mm Ø**

- Vortexing for tubes with diameter up to 30 mm
- Vacuum suction feet hold to the work surface and prevent the mixer from movement
- Sturdy base safely secure mixer in place during operation

**GEL DOCUMENTATION**

**TT-BLT-470  
SafeViewer Blue Light Transilluminator**



**470nm wavelength**

- Safe for users and diminishes damage to DNA samples
- Uniform illumination with high intensity LEDs
- Portable and lightweight
- Durable LEDs (up to 100,000 hours)



Product Video

Post-staining for Agarose Gel (a) (b)

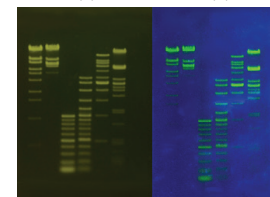


Figure 1: Various ladders and markers run at 1.5% TBE agarose gel. The agarose gel is post-stained with ViSafe Green Gel Stain (Vivantis). The gel is visualized using transilluminator with (a) blue light (Hercuvan); (b) UV light.

Precast for Agarose Gel (a) (b)

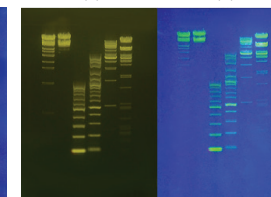


Figure 2: The agarose gel is pre-stained with ViSafe Green Gel Stain (Vivantis). Various ladders and makers run at 1.5% TBE pre-stained agarose gel. The gel is visualized using transilluminator with (a) blue light (Hercuvan); (b) UV light.



**DRY BATH INCUBATOR**

TT-100F/HT/HL/CL/CTL  
Mini Dry Bath Incubator



TT-100F/HT/CL



TT-100HL/CTL

R.T. +5-100°C/  
-10-100°C

- Available with heat only or heat & cool models
- Compact palm size design, saving crowded bench space
- Various block options with different tube sizes
- Digital time and temperature display
- Nine programmable programs
- Built-in temperature calibration
- Custom blocks available upon request

**TT-200BI  
Biological Indicator Incubator**



R.T. +5-100°C

- Various blocks option for different sizes of biological indicator vials
- Compact and save space
- Digital time and temperature display
- Custom blocks available upon request
- Built in temperature calibration function

TT-100-DHT/ TT-100-DHC  
Dry Bath Incubator



R.T. +5-100°C/  
-10-100°C

- Available with heat only or heat & cool models
- Various blocks options for microtubes, PCR plates and other small vessels
- Simultaneous indication of set and actual temperature and time
- Up to 5 consecutive multiple program setting
- Built-in temperature calibration
- Custom blocks available upon request

**TT-70-2/ TT-60-4  
Microplate Incubator**



TT-70-2



TT-60-4

R.T. +5-70°C,  
microplate  
(96/384-well) and  
cell culture plates  
(24, 48, 96-well)

- Simultaneous display of set and actual temperature and time
- Microprocessor PID controller controls time and temperature with good linearity
- Audio alarm signals upon program completion
- User friendly operating interface



Product Video

R.T. +5-100°C

- Bright, clear and intuitive LED display
- Accurate PID temperature controller
- Anti-corrosion stainless steel inner chamber
- Leak-proof inner chamber
- Built in water level sensor with audible alarm to prevent from drying
- Independent temperature, time controls and drain valves



Product Video

**SAMPLE CONCENTRATOR**

TT-200-1-SC / TT-200-2-SC  
Sample Concentrator



TT-200-1-SC



TT-200-2-SC

R.T. +5°C-150°C

- Independent gas control valves
- Adjustable gas needle position to suit different types of sample tubes
- Built-in over temperature protection device, automatic fault detection system and alarm function
- Digital display of temperature and time
- Various blocks with different tube sizes
- Fits all standard fume hood



QR Product Video

**TT-200-96SC  
96-Well Sample Concentrator**



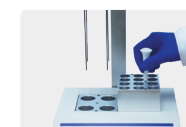
R.T. +5°C-150°C,  
96-well PCR plate/  
microplate

- Concentrate up to 96 samples simultaneously
- Optional flow regulating valve to minimize wastage of nitrogen gas
- Adjustable gas needle position to suit different types of sample tubes
- Built-in over temperature protection device, automatic fault detection system and alarm function
- Digital display of temperature and time
- Fits all standard fume hood

Each Standard Set Includes



01. Block lifter
02. Allen wrench



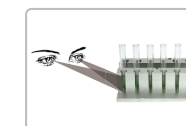
Easy exchange of block module with block lifter

**TT-200N-VSC  
Visible Sample Concentrator**



R.T. +5°C-150°C,  
test tubes or containers

- 12 independent gas control valves
- Sample level of the concentrate can be observed during operation
- Adjustable gas needle position to suit different types of sample tubes
- Built-in over temperature protection device, automatic fault detection system and alarm function
- Digital display of temperature and time
- Fits all standard fume hood



Visible Block

Optional Accessories



TT-SC-V

Flow regulating valve can be connected to nitrogen gas tank and inlet of gas needle to control nitrogen gas flow rate

**WATER BATH**

TT-TWB-2L/4L/5L and 6L  
Marina Throstatic Water Baths



TT-TWB-2L



TT-TWB-4L



TT-TWB-6L



TT-TWB-5L

**VACUUM ASPIRATOR**

TT-VA-8/TT-VA-35  
Vacuum Aspirator

- High quality vacuum membrane (oil-free and oil-resistant) and made of durable 3mm rubber
- Hassle-free installation of self-locking connectors
- Stainless steel collecting tip is anti-corrosive



Product Video

max. flow rate  
35L/min,2500ml  
capacity



TT-VA-35

max. flow rate  
8L/min,1000ml  
capacity



TT-VA-8



# HERCUVAN LAB SYSTEMS

## MINI CATALOGUE

EMAIL. [INFO@HERCUVAN.COM](mailto:INFO@HERCUVAN.COM)  
WEB. [WWW.HERCUVAN.COM](http://WWW.HERCUVAN.COM)

FOLLOW US



HERCUVAN