

TT-200-96SC 96-Well Sample Concentrator

HIGHLIGHTS

- Concentrate up to 96 samples simultaneously
- Optional flow regulating valve to minimize wastage of nitrogen gas.
- Can be used in fume hood when concentrating toxic solvents
- Adjustable gas needle position to suit different types of sample tubes
- Simple installation, operation and maintenance
- Built-in over temperature protection device, automatic fault detection system and alarm function
- Digital display of temperature and time
- Compact foot print, fits all standard fume hood

TT-200-96SC 96-Well Sample Concentrator is intended to provide rapid evaporation of solvents from samples in 96-well PCR plate, 96-well microplate or up to 96 x 0.2ml microtubes in a single batch. It works under the principle of solvent evaporation to concentrate samples. By heating the samples/ solution in a dry block heater coupled with a stream of inert gas (nitrogen) direct to the surface of the sample, vapour is rapidly driven off and the sample is quickly concentrated.

The sample concentrator is built with gas chamber with 96 gas needles mounted onto a height adjustable stand which allows flexible positioning above the samples. It is a compact device commonly used to replace high cost rotary evaporators and safe to be used in fume hood.



APPLICATIONS

- Molecular biology, drug screening and analytical procedures (HPLC, GCMS), hormone assays
- Remove solvent from DNA samples
- Chromatographic analysis

TECHNICAL DATA

Specifications	TT-200-96SC 96-Well Sample Concentrator
Temperature control range	R.T. +5°C – 150°C
Temperature stability at 40 -100°C	≤±0.5°C
Temperature stability at 100 -150°C	≤±1.0°C
Block temperature uniformity at 100°C	≤±0.5°C
Block temperature uniformity at 150°C	≤±1.0°C
Temperature display accuracy	0.1
Heating speed	≤30 min (40°C to 150°C)
Digital time setting	1min – 99h 59min or continuous
Maximum vertical travel	275 mm
Outer diameter of gas inlet	Ø 7 mm
Nitrogen pressure	≤0.1MPa
Nitrogen flow rate	0 – 10L/min
Needle length	80 mm
Sample capacity	1 standard plate block
Voltage	AC 110V / AC 220V, 50/60 Hz
Power	400W
Fuse	250V, 3A/6A, Ø5x20
Dimension (W x D x H)	220 x 260 x 445 mm
Net weight	5.5 kg
Permissible ambient temperature	5°C – 30°C
Permissible relative humidity	≤70%

ORDERING INFORMATION

Cat. No.	96-Well Sample Concentrator
TT-200-96SC-110V	96-Well Sample Concentrator TT-200-96SC, AC 110V
TT-200-96SC-220V	96-Well Sample Concentrator TT-200-96SC, AC 220V

OPTIONAL ACCESSORIES

Cat. No.	Block for Sample Concentrator	Diameter of block well	Bottom shape of block well	Dimension
TT-DT-16	96-Well PCR plate or 96 x 0.2 ml microtubes	6.7 mm	Cone bottom	95.5 x 153.5 x 33.5 mm
TT-DT-17	96-Well microplate	76 x 116 x 4 mm (top)	Flat plate	95.5 x 135 x 22.5 mm

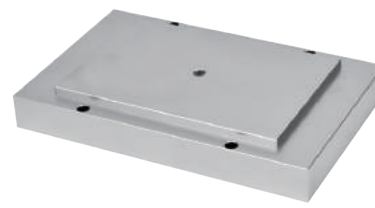
Cat. No.	Flow regulating valve
TT-SC-V	Flow Regulating Valve for Sample Concentrator



TT-SC-V



TT-DT-16



TT-DT-17