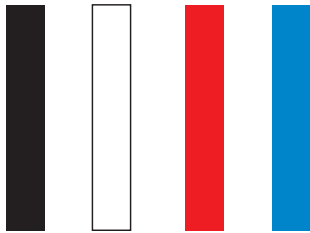


SymphonyPAGE Combs SELECTION GUIDE

SymphonyPAGE Vertical Electrophoresis Systems comprise a wide catalogue of casting combs for gel casting. In addition to the standard options shown in this selection guide, custom combs are also manufactured on request.

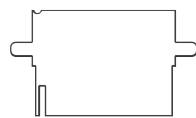


Black – 0.75 mm for tightly resolved bands White – 1 mm supplied as standard comb
 Red – 1.5 mm to maximise sample volume Blue – 2 mm to maximise sample volume

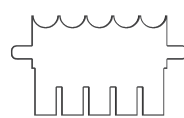
Black and white combs are recommended for high resolution gels and publication quality data. Red and blue are to scale-up nucleic acid volumes for preparatory techniques.

Note: Volume refers to maximum well volume of the longer tooth.

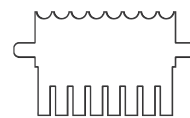
SymphonyPAGE Mini



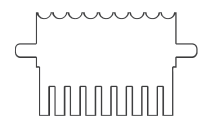
SPMN1-1, (650 μ L)



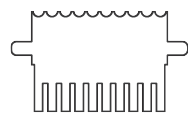
SPMN5-1, (100 μ L)



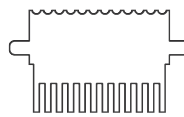
SPMN8MC-1, (60 μ L)



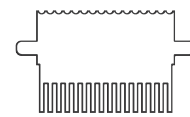
SPMN9-1, (50 μ L)



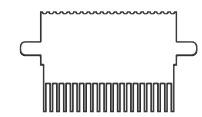
SPMN10-1, (40 μ L)



SPMN12-1, (35 μ L)



SPMN16MC-1, (25 μ L)



SPMN20-1, (20 μ L)

SymphonyW Maxi



SWMX1-1, (1500 μ L)



SWMX5-1, (200 μ L)



SWMX10-1, (100 μ L)



SWMX18MC-1, (50 μ L)



SWMX24-1, (40 μ L)



SWMX30-1, (35 μ L)



SWMX36MC-1, (25 μ L)



SWMX48-1, (20 μ L)



MC = multichannel pipette compatible